

\$9,999,900 - 166 CRESCENT RD

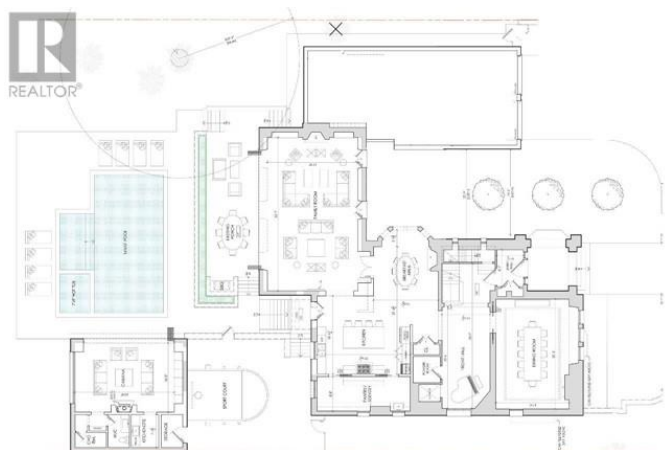
Listing ID: C3948301

\$9,999,900

7 Bedrooms, 8 Bathrooms Single Family

166 CRESCENT RD, Toronto, Ontario,
M4W1V2

Build In Rosedale! Permits In Hand! Rare Fully-Approved Ravine Estate. Truly Singular Opportunity To Own An Exceptional Historic Property Master-Planned By Renowned Architect. 1.34 Acres Of Generous Table Land With Stone Steps & Trails Through Private Ravine. Concept Proposal Includes 6+1 Br, 8 Baths, Pool & Hot Tub, Cabana With Fireplace Lounge & Sports Court, Chef's Kitchen, Theatre, Wine Cellar, Elevator, 2-Car Garage, Circular Drive With Parking For 8. **** EXTRAS **** 11 Min Walk To Yonge Street, Shops/Boutiques Of Summerhill & Of Course The ""Five Thieves."" Under 10 Mins To Toronto's Finest Schools: Ucc, Bss, Branksome & St. Georges. Live In OneOf Canada's Most Historically Significant Neighbourhoods. (id:15820)



MLS®, REALTOR®, and the associated logos are trademarks of The Canadian Real Estate Association

Data Provided by: Toronto Real Estate Board

Last Modified: 13/01/2018 09:28:38 AM

Listing Office: CHESTNUT PARK REAL ESTATE LIMITED