

\$8,695,000 - 29 BLYTH HILL RD

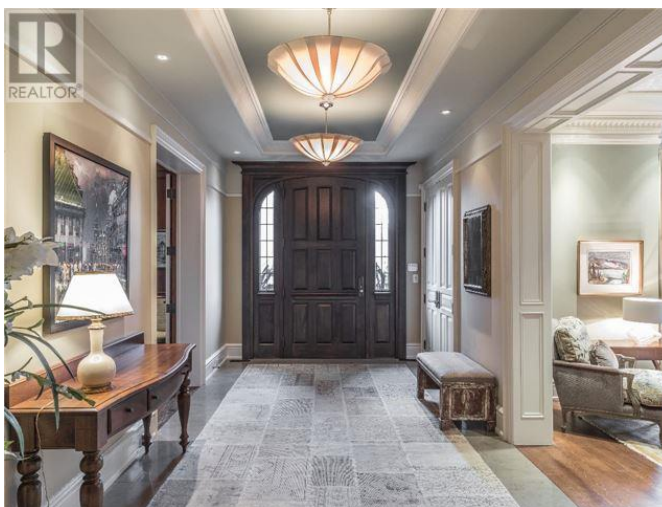
Listing ID: C4244818

\$8,695,000

7 Bedrooms, 8 Bathrooms Single Family

29 BLYTH HILL RD, Toronto, Ontario,
M4N3L6

An Exceptional Residence In Lawrence Park On A Prime Street Overlooking Sherwood Park Ravine. This 3-Storey Richard Wengle Designed Home Sits Atop An Expansive 14,326 Sf South Exposure Lot W/ 9,334 Sf Of Luxurious Space. Grand Principal Rooms For Formal Entertaining, 6 Bdrms/8 Baths, 4 Car Garage W/Heated Drive, Theatre/Exercise & Game Rm W/B-I Bar, Wine Cellar, Backyard Oasis W/2 Sided Ravine View, Pool, Hot Tub & Outdoor F/P Makes It A Truly Unique Offering**** EXTRAS **** See Video Link. Rare 3-Storey W/6 Bdrms Renovated By Renowned Designer W/Exquisite Detailing & Finishes Thruout Incl Sumptuous Private Master Suite & 5 Add'l Bdrms. Top Schools Incl Blythwood/Crescent/T F S/Havergal/Branksome/St Clements (id:15820)



MLS®, REALTOR®, and the associated logos are trademarks of The Canadian Real Estate Association

Data Provided by: Toronto Real Estate Board

Last Modified: 12/09/2018 02:59:11 PM

Listing Office: CHESTNUT PARK REAL ESTATE LIMITED